

# ***Robotmaster<sup>®</sup>***

CAD/CAM FOR ROBOTS

**Mastercam<sup>®</sup>**  
Authorized Technology Partner

# Robotmaster®

*Seamless integration that delivers quick robot programming and tight conformance to design*

## Program toolpaths for manufacturing using Mastercam Mill or Router

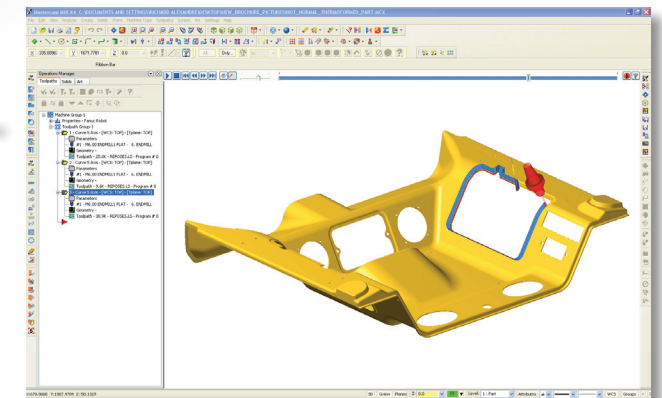
Use a familiar process and tools from CNC machine programming  
Leverage all the powerful Mastercam features including:

- fast geometry creation
- data translators for importing all CAD formats
- associative and feature based toolpath programming
- automatic toolpath generation

*Ideal for milling, trimming, welding, painting, sanding, polishing, de-burring, spray coating, dispensing, and more*

"Program adjustments are easier and more accurate using Robotmaster rather than making them manually ..."

- Tripp Plastics



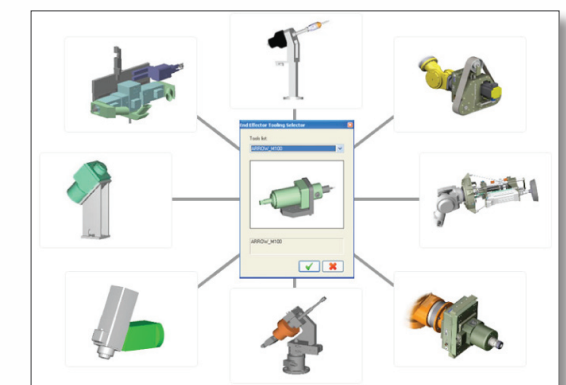
## Use Robotmaster's extensive library to setup your robot tasks in Mastercam

Choose from FANUC, ABB, MOTOMAN, KUKA, STAUBLI and more  
Enter robot operating parameters such as:

- End of arm tooling
- Setup (user frame and tool center point data)
- Motion parameters

"Now the trajectory is controlled exactly the way I planned it, working on the computer screen ..."

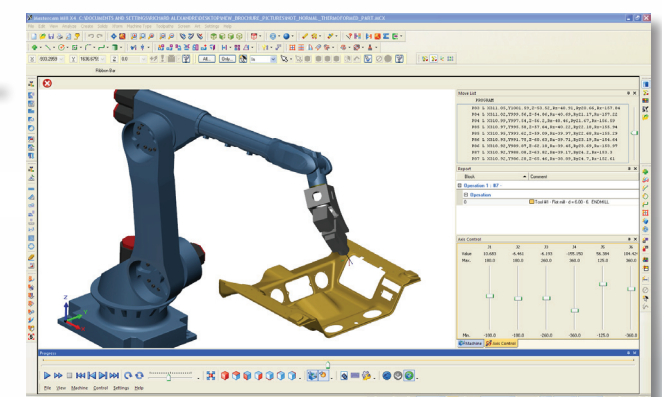
- AV&R Vision & Robotics



## Validate and optimize programs with Robotmaster's robot simulator

View machine operation in continuous or step mode  
Simulate individual operation or complete task  
Detect collisions automatically  
View robot only or entire manufacturing cell

**the cost-efficiency  
and flexibility of robots  
+  
the ease of programming  
of Mastercam**



### **Generate more profit with your robot**

off-line programming eliminates lost production time

### **Eliminate point-by-point editing**

precise conformance to design in a fully integrated CAD/CAM solution

### **Break the programming barrier**

singularity checking, collision detection, joint limit and reach issues within clicks of your mouse

**Take advantage of your robot's maximum workspace**

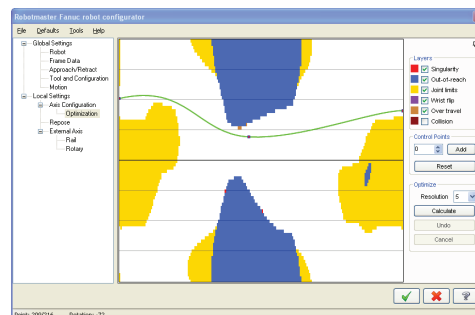
[www.robotmaster.com](http://www.robotmaster.com)



# A proven solution for the automobile, aircraft, shipbuilding, composites, plastics, woodworking industries, and more . . .

## Translate CNC toolpath data into optimized 6-axis robot programs

Set robot configuration for optimal robot posture  
Manage motion between operations  
Analyse reach study automatically  
Control rotation around the tool precisely:  
- Avoid singularity, reach and joint limits  
- Optimize joint speeds to ensure smooth robot playback

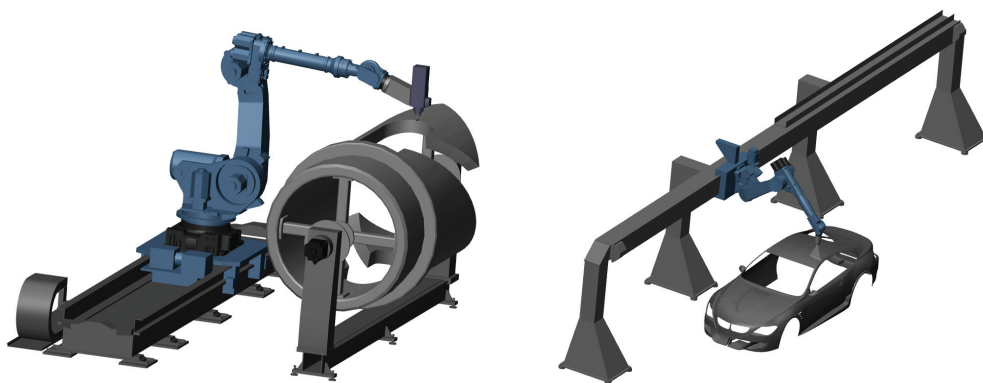


## Generate robot-ready program files with Robotmaster's integrated post-processor

Generate programs in robot native language  
Customize robot code output  
Manage long programs within limited robot memory by multi-file output

## Extend range of travel for large work pieces

Boat hulls, aircraft wings, woodworking and others  
Easily program external axes (linear rails and/or rotary tables)



[www.robotmaster.com](http://www.robotmaster.com)

Copyright 2009 Jabez Technologies Inc. All rights reserved. Robotmaster is a registered trademark licensed exclusively to Jabez Technologies Inc. Mastercam is a registered trademark of CNC Software. Other trademarks and registered trademarks are property of the respective owners.

**JABEZ** Technologies