



CAMDENBOSS®
CONNECT. ENCLOSE. INNOVATE.

DRILCO

Avenida de Somosierra, 22E - 6 y 7
E-28703 S.S. de los Reyes (Madrid)
Tel. +34 916 591 900 · www.drilco.net

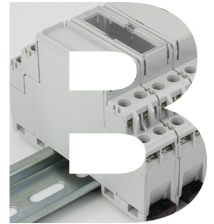


NEW & IMPROVED

CMEB / *EXTENDABLE DIN RAIL TERMINAL ENCLOSURE!*

The **CMEB Extendable DIN Rail Terminal Enclosure** features two removable side panels offering accessible internal wiring. Unique extension parts can be used to connect multiple modules together, providing more poles and wiring options.

Internal solder tags offer an effective way of connecting to PCBs or flying wires. The new and improved CMEB accommodates full-size internal PCBs, with the extended version supporting horizontal and vertical PCBs or separators between high and low-power sides.

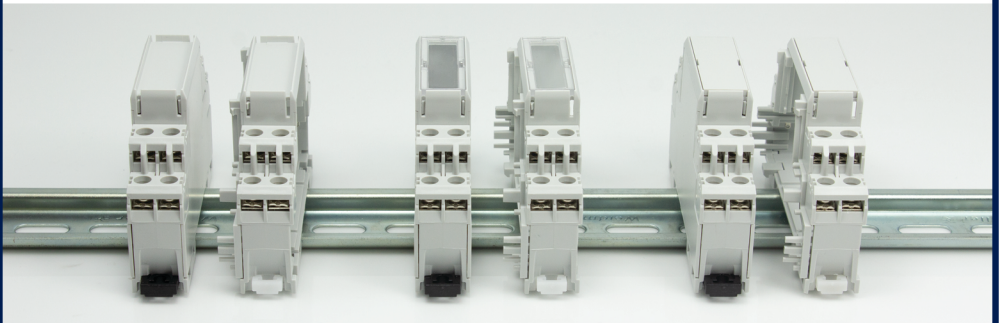


CONNECT.

MODULAR.

EXTEND.

BUILD.



CONTACT OUR SALES TEAM FOR A FREE SAMPLE!

sales@camdenboss.com

+44 (0) 1638 716101

www.camdenboss.com

CONNECT.

Supplied and fitted with eight 7mm saddle washer connectors, secured by M3 screws, the CMEB removes a step from the assembly process, allowing you to connect up your PCB or components, ready for installation.



Accommodates cable sizes:

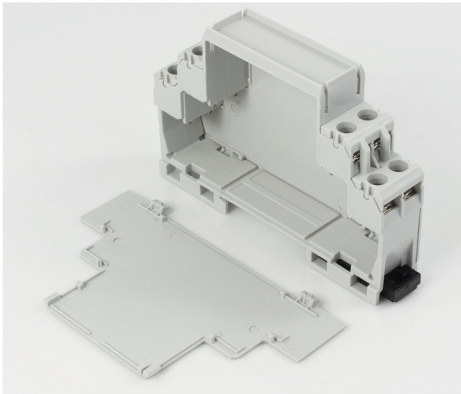
- Rigid/Solid - 2.5mm²
- Rigid/Stranded 1.5mm²
- Flexible 1.5mm²



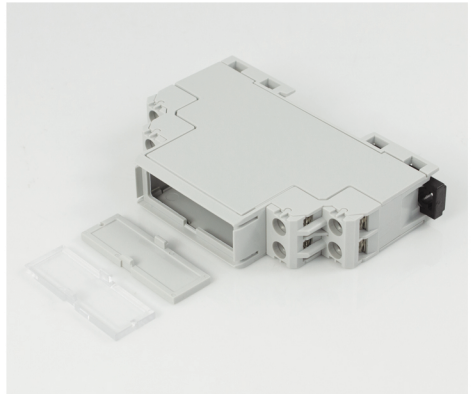
Each terminal position has adjoining solder tag, simplifying the assembly of the internal electrical componentry.

MODULAR.

The CMEB's snap fit, modular design removes the need for screws, streamlining the assembly process whilst at the same time, retaining the integrity and IP safety rating of the enclosure. Each CMEB module has an industry standard width of 17.5mm.



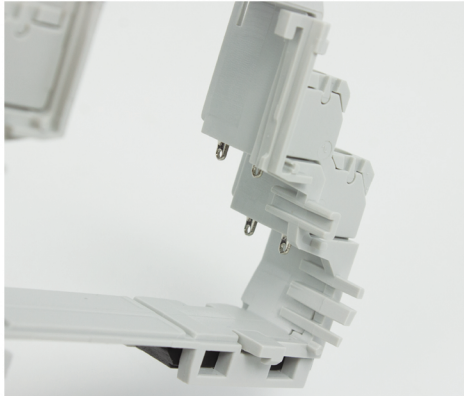
Two removable side panels easily clip on and off for fast assembly or maintenance. This provides improved access to the internal space, especially with multiple modules.



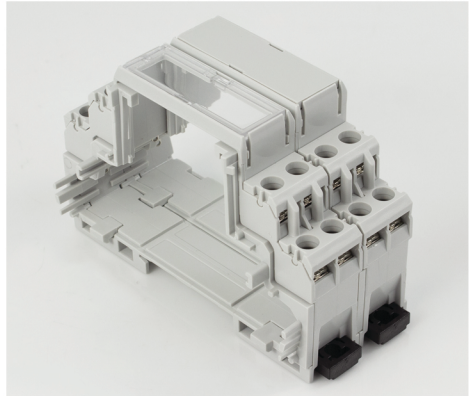
The open top body allows for a selection of two different lid options (with more to order on special request). Providing easy customisation or parts to be swapped out.

EXTEND.

Specially designed extension arms allow you to assemble a suitably sized enclosure, based on your width requirements. A simple snap fit modular method is employed yet again, providing flexibility of design and a creative approach to product assembly.



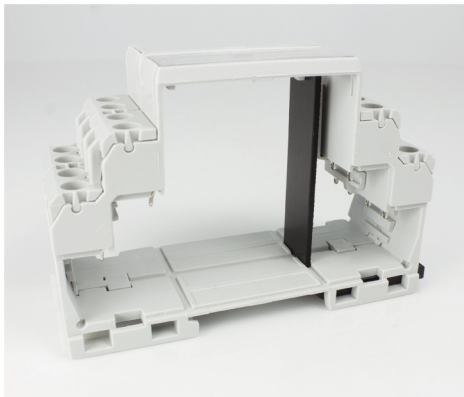
The extension arm not only allows you to join multiple modules together, but also adds horizontal PCB positions and an additional vertical position.



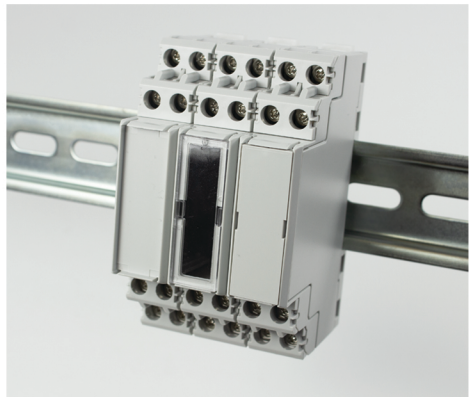
Select from different lid styles to suit your application. Extending aids in separating out operating sides such as low voltage or input and output operating enclosures.

BUILD.

Build the way you want to. Join the different kits together, mix and match lid options, operate multiple PCBs in a variety of positions and much more... With the CMEB we wanted to retain the flexibility found throughout the DIN Rail product family at CamdenBoss.



Connecting up your PCB or internal components could not be simpler with the use of integrated solder tag connectors. Implemented to save you time and money.



The CMEB complies with EN60999-1 terminal standards and DIN 43880 DIN Rail standards. The enclosure has also been tested to IEC60998-2-1.

PART NUMBER (KITS)

BODY TYPE	PART NUMBER	KIT INCLUDES
SOLID TOP	CMEB/1ST/KIT	1x solid top body, 2x end panels, 2x terminal screw covers, 1x black clip, 1x white clip
OPEN TOP CLEAR	CMEB/1PC/KIT	1x open top body, 2x end panels, 2x terminal screw covers, 1x clear top, 1x black clip, 1x white clip
OPEN TOP GREY	CMEB/1PG/KIT	1x open top body, 2x end panels, 2x terminal screw covers, 1x grey top, 1x black clip, 1x white clip
SOLID TOP EXTENSION*	CMEB/1ST/E/KIT	1x solid top body, 2x extension arms, 2x terminal screw covers, 1x white clip
OPEN TOP CLEAR EXTENSION*	CMEB/1PC/E/KIT	1x open top body, 2x extension arms, 2x terminal screw covers, 1x clear top, 1x white clip
OPEN TOP GREY EXTENSION*	CMEB/1PG/E/KIT	1x open top body, 2x extension arms, 2x terminal screw covers, 1x grey top, 1x white clip

*Extension kits to be ordered alongside at least one standard housing e.g. For a 5 way housing please order 4 extension kits and 1 standard housing.

DISCOVER THE POSSIBILITIES!

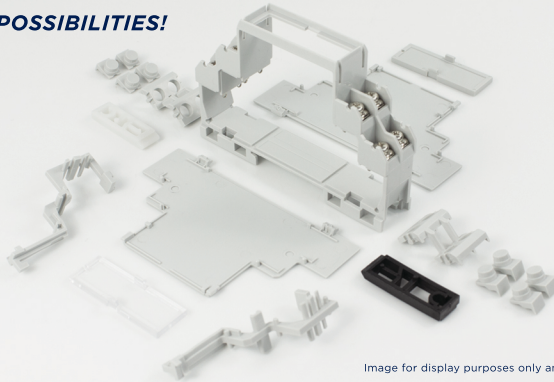


Image for display purposes only and not representative of a standard kit.

ACCESSORIES

PART NUMBER	DESCRIPTION
CMEB/BL/8	DIN Rail Terminal Enclosure Terminal Blank Set of 8

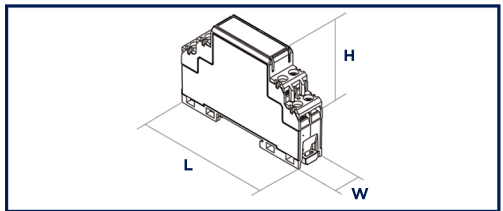
The CMEB blanking kit provides a way of closing off certain terminals that are not required. This ensures that the installer does not wire the enclosure incorrectly.



INDIVIDUAL SIZE DIMENSIONS

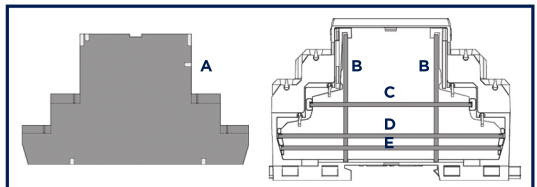
EXTERNAL DIMENSIONS (LXWXH)	INTERNAL DIMENSIONS (LXWXH)
90mm x 17.86mm x 61.3mm	86mm x 42.4mm x 15.25mm

WALL THICKNESS
Enclosure - 1.09mm / End Panels - 1.3mm



PCB POSITIONS

PCB MOUNTING POSITION	MAX PCB DIMENSIONS (LXW)
A = Planar	See technical drawing
B = Vertical	48mm x 14.7mm*
C = Horizontal	60.7mm x 16.5mm*
D = Horizontal	84.7mm x 16.5mm*
E = Horizontal	83mm x 16.5mm*



CONTACT OUR SALES TEAM FOR A FREE SAMPLE!

sales@camdenboss.com

+44 (0) 1638 716101

www.camdenboss.com